

All Gender Bathroom Floor Plans

Locations at Clovis Community College and the Herndon Campus



STATE CENTER
COMMUNITY COLLEGE DISTRICT

DATE: 10/12/16

CLOVIS COMMUNITY COLLEGE

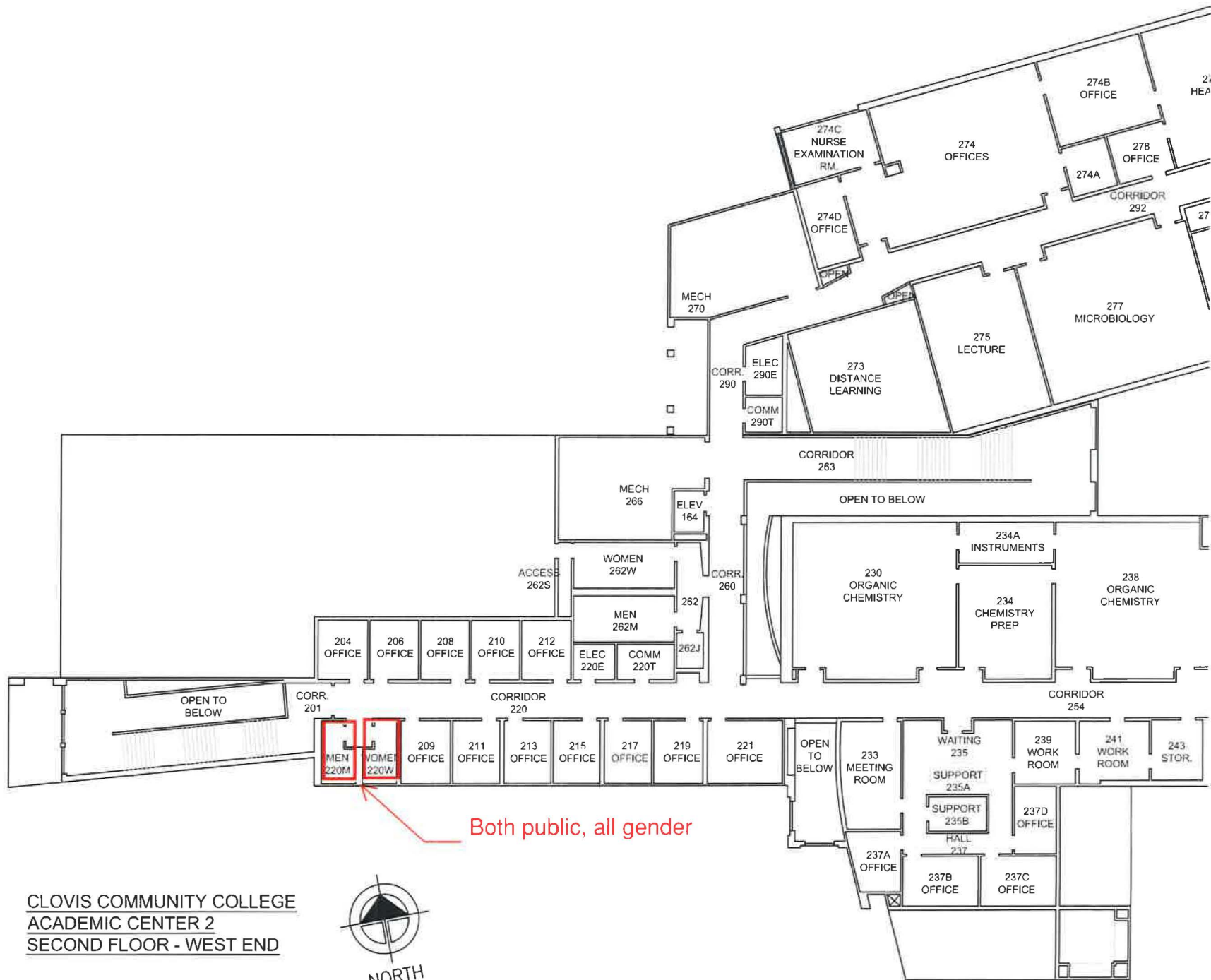
ACADEMIC CENTER 2

BLDG. NO.
12



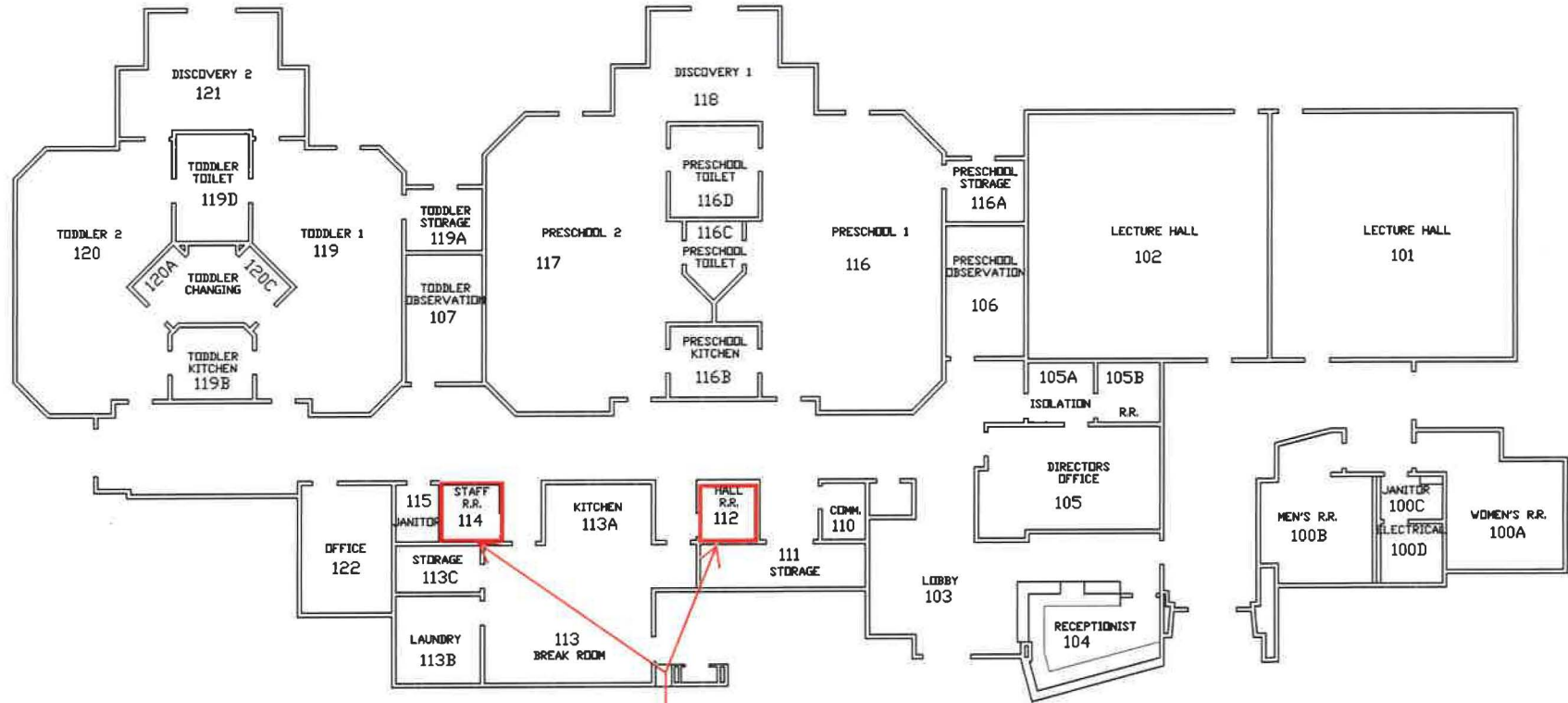
CLOVIS COMMUNITY COLLEGE
ACADEMIC CENTER 2
FIRST FLOOR - EAST END





CLOVIS COMMUNITY COLLEGE
ACADEMIC CENTER 2
SECOND FLOOR - WEST END





Both restrooms are public, all gender

CHILD DEVELOPMENT CENTER





STATE CENTER
COMMUNITY COLLEGE DISTRICT

DATE: 03/23/17

CCC HERNDON CENTER

BLDG "A" SECOND FLOOR

BLDG NO
100

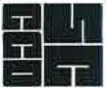


Both public, all gender

BUILDING "A" SECOND FLOOR



NORTH



STATE CENTER
COMMUNITY COLLEGE DISTRICT

DATE: 03/23/17

CCC BUILDING B
CCC HERNDON CENTER

BLDG. NO.
101

CCC HERNDON CENTER
BUILDING B



NORTH

